



HANCOCK & MOORE

OUR STORY

Let's start with our real heroes...our craftspeople. Nestled in the foothills of North Carolina, our dedicated team of over 400 employees spend 50 weeks a year at two different factories building the finest furniture available. At Hancock & Moore, we understand that style emanates from within. That is why each Hancock & Moore original is custom-made to your exacting requirements. Whether you choose a classic wingback chair in burnished leather or a crocodile-embossed top-grain hide—your personal choice defines your own unique style. Our passion for accommodating self-expression begins with endless choices of styles, leather, fabric, trim and wood finishes. Think of them as personality building blocks with the end result being a fabulous piece of furniture that conveys your distinct vision. Under the stitching you'll know that our tradition of hand-built quality since 1981 and pride in craftsmanship ensures that your statement of self-expression will last for generations to come.

To this day, up to 80 hours are spent handcrafting a piece of Hancock & Moore furniture. Every sofa, chair and bench bears the signature of the artisan who created it, reflecting the hard day's work that went into its construction. To Hancock & Moore, custom-made furniture is the purest form of self-expression. That is why we have spent the past 40 years creating furniture exactly as you envisioned.

We invite you to visit us and let us show you first hand our many skills. Call us first to schedule an appointment.

166 Hancock & Moore Lane
Taylorsville, North Carolina 28681

(828) 495-8235

www.hancockandmoore.com

© HANCOCK & MOORE 2020

www.hancockandmoore.com, 2

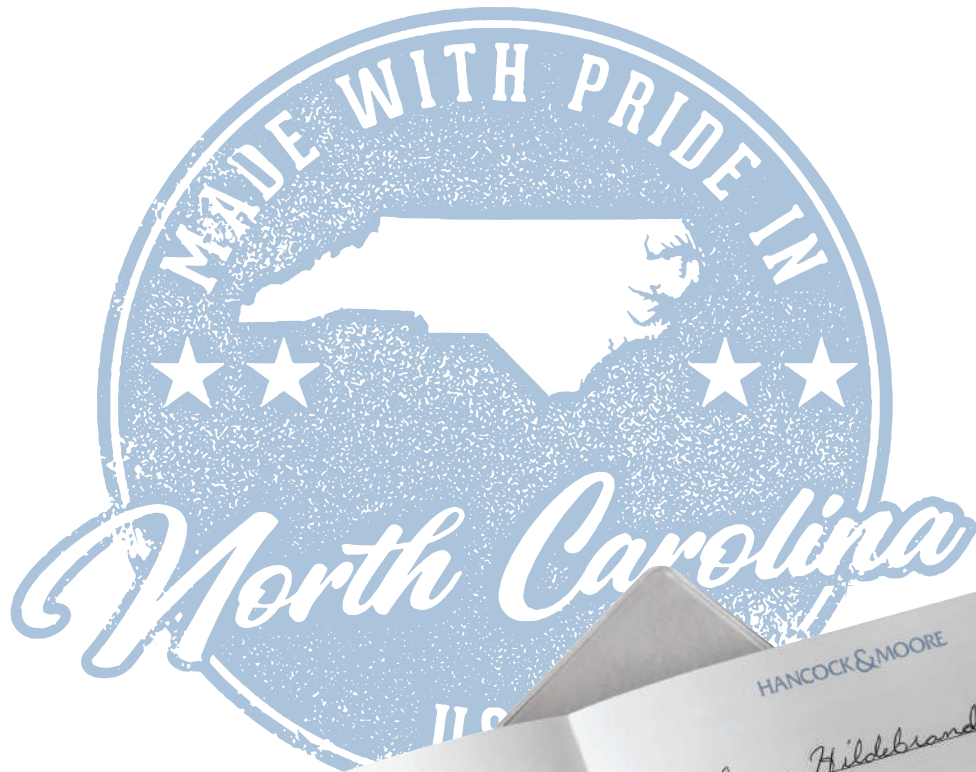


CONSTRUCTION

Our artisans spend up to 80 hours constructing a single piece, guaranteeing the quality construction that has attributed to our reputation as creators of America's finest furniture. As many as 17 craftsmen and countless hours will be devoted to your Hancock & Moore heirloom, making it truly your own original.



1. Clear Maple Frame or Layered Baltic Birch
2. High Density 2.5 lb. foam core wrapped with plush fiber encased in sewn ticking
3. Steel corner brackets
4. Every coil is hand-tied and knotted in at least eight directions and anchored to the frame
5. Legs may be extensions of the frame or double-doweled into the frame
6. Up to 21-Step Finishing process is applied to all exposed wood



Our craftsmen are passionate and proud to create custom furniture to be enjoyed for generations. As each phase of craftsmanship is completed, the artisan responsible signs off on the hangtag - acknowledging a job completed to our unparalleled quality standards of our craftsmen. From our master marker to our sewer, from our upholsterer to our final inspector, our artisans demonstrate their passion through their abilities, promising a final product that lives up to our reputation as creators of America's finest furniture.



FRAME CONSTRUCTION

Every Hancock & Moore frame is built to exacting standards by our craftsmen. Whether it's traditional or contemporary, our frames use best in class materials and carefully engineered joinery that will remain solid over the lifetime of the piece. Hancock & Moore frames promise uncompromising quality so your unique piece of furniture can be passed down for generations to come.



SPRING UP

Since 1981, Hancock & Moore has practiced eight-way hand-tied coil construction. As creators of America's finest furniture, we remain one of the only manufacturers to continue that practice. This time-consuming technique—typically found in antique chairs—involves tying each seat coil with heavy cord, using at least eight knots. The result is firm but comfortable support that will last for years.



SEWING

Hancock & Moore's team of sewers spend countless hours as apprentices before being entrusted with an entire chair or sofa. Devoted and passionate about honing their skills, they pay special attention to the quality and look of our fine furniture collections, from decorative top-stitching to sewing seams with heavy-duty upholstery machines.



SANDING

At Hancock & Moore, sanding means more to us than simply making a wooden surface smooth to the touch. Our team of artisans carefully hand-sands each piece of furniture to enhance its character. Together with finishing, this process brings out the deep beauty of the wood. After the frame is built, sanders refine any rough patches in the wood, even on areas hidden from view.



UPHOLSTERY

Where the frame meets the covering, only a master upholsterer can ensure a lasting, quality fit. Like a bespoke suit or couture gown, every piece of furniture is measured, padded and stitched with an expert hand and artful eye. This process is the foundation for a Hancock & Moore's one-of-a-kind piece will last a lifetime.



TUFTING

Our traditional styles are distinguished by our intricate tufting ability. Since 1981, we have used the same centuries-old method, which requires the upholsterer to gauge each pleat of leather or fabric so that all tufts are correctly proportioned. In creating the tuft, twine is passed through layers of material, then pulled taut and secured, usually with a button. Blind or Biscuit Tufting is also available.



CUSHIONS

Our dedication to quality extends beyond the surface. All Hancock & Moore cushions are made from High Density 2.5 lb. foam, a technologically advanced material that springs back into shape quickly and is more stable than the polyurethane used by most manufacturers. Our High Density foam may be a difficult material to work with, but we believe your comfort is worth the extra effort.



FINISHING

With over 50 finishes varying in color and gloss to choose from, our wood can be made to look as reflective and sleek as glass or to match the time-worn surfaces of a treasured antique. The process, which can take up to 21 steps, creates a finish with unparalleled character and luster. Because of this meticulous process, we can even create a customized finish just for you.

LEATHER

Indicative of luxury at the highest level, leather is a timeless material that only gets better with age. Our designers scour tanneries across the globe in search of the highest grade, unique leathers. We comb through each leather to ensure perfection and quality control that are second to none. From snakeskin-embossed ottomans to black suede sofas, leather adds luster to any space, from traditional to contemporary. Like a pebbled leather wallet or quilted lambskin moto jacket, our leather furniture evokes the same level of high style as a designer fashion piece.

Our extensive gallery boasts more than 400 leathers. As creators of America's finest furniture, our line of leathers includes the best of everything: top-grain leathers, exotic animal skins, metallic and embossed leathers. Our leathers are selected for a natural appearance, with distinctive markings that impart unique character. The natural surface of leather is like a landscape, with varying textures and shadowy furrows. These distinctive features are unique to genuine leather, a product which is real, not engineered. As with all things in nature, no two hides will be exactly alike.

COMMON LEATHER MARKINGS



Cattle ranchers use distinctive brands to identify their steers but these brands are rarely seen on furniture.



Healed scratches from barbed wire nicks are common markings on an unaltered hide.



Pore patterns (the hide's grain) distinguish the surface of the unaltered hide.



Neck and shoulder wrinkles look like furrows.



DETAILS

We invite you to get creative with your furniture's design and make your own original. From hand lacing to stitching to quilting, we offer a myriad of embellishment options to dress up a piece of furniture. Our intricate detailing techniques and countless options allow you to be creative and personalize your furniture any way you see fit. With endless possibilities, the choice is yours.

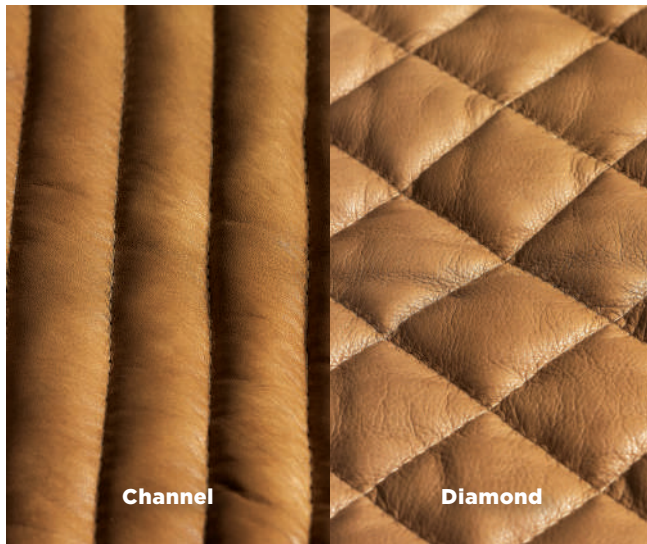


HAND LACING



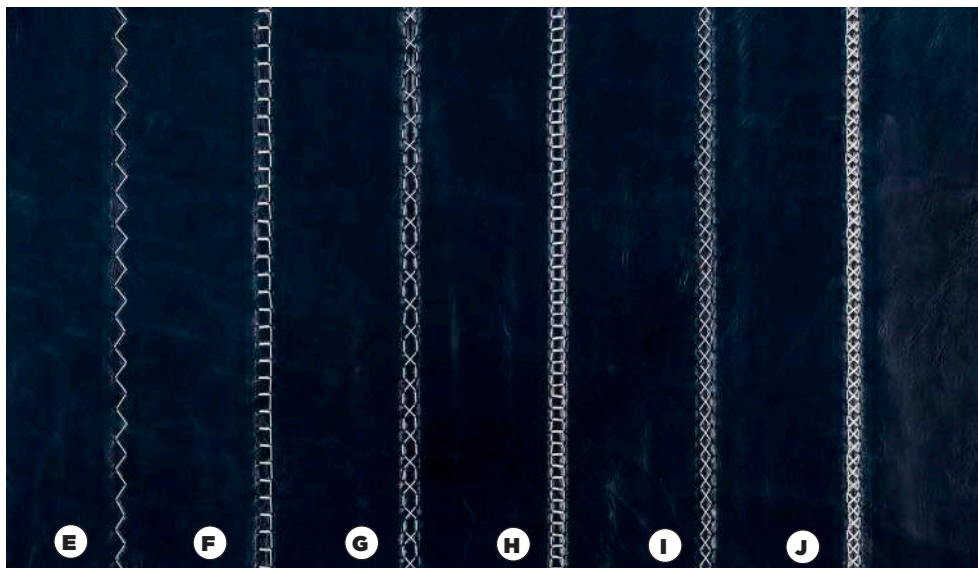
Our artisans have long practiced hand lacing, a decorative trim created through a time-consuming process. The leather or fabric which will receive the decorative trim is laid out and the slits for the lacing are measured for synchronization and then cut. Lace or thread is then woven by hand, in and out of the openings on the cover, making it a work of art.

QUILTING



Quilting is a decorative feature applied to upholstery. Originally done only on fabric, we have taken the art of quilting and perfected it on leather. Because of the extra fill required to create quilts, quilted furniture can provide very luxurious seating. We offer a variety of channel and diamond quilts. Please see our price list for our many available options.

STITCHING



We practice a variety of standard and designer stitching techniques to ensure your piece of furniture fits your own unique style. Various stitching patterns can create a subtle or prominent effect.



BURNISHING

Our burnishing specialists employ a labor intensive hand sanding process and applying layers of waxes, dyes and oils to give a unique, almost antique look. The leather piece has an almost instant lived-in look and is easily recognized and appreciated as the beautiful furniture it is. Like fine leather hand goods, our burnished leathers' unique patinas develop a depth and uniqueness over time. No two pieces are alike.



BRANDING

A unique part of our embellishment offerings, branding is achieved using traditional Western ranch methods from authentic brands created at a blacksmith's shop in Southwest Texas. The brands are heated over an open flame and then applied to the leather at Hancock & Moore. Once the brand has cooled, a sealer is applied. We also offer "Customers Own Brand", which is a great way to make your own original.



HAND PAINTING

Our professional artists take on the hand painting process. The leather is lightly buffed, and then the artist paints the chosen design onto the furniture. Once the painting is applied, our expert craftsman treats the leather to ensure lasting beauty. Custom designs are available and quoted on an individual basis.



NAILING

Nails can add a distinctive look to furniture. From rustic, antiqued nails to shiny, nickel nails, these decorative elements add a finishing touch to a product to enhance the look of the leather.



GIMP

Gimp is a decorative trim applied along the welt line of a piece of furniture. The leather or fabric is folded and sewn to create a hem. Gimp can be created with the finish side of leather, the reverse (or flesh) side of leather or fabric.



BULLION FRINGE

Leather Bullion Fringe is a type of decorative trim applied on the outside of furniture to portray a frayed look. Originally, bullion fringe was made only from plain or crepe cords, but we have taken this concept and applied it to leather, giving it a unique and distinctive look.



PILLOWS

Add comfort and support to your armchair or color to your sofa with one of our pillows. Standard pillows feature a luxurious blend/down fill.



EMBROIDERY

Embroidery adds a unique touch to a piece of furniture, making it truly your own original. We offer almost every type of design or logo to be embroidered on most Hancock & Moore leathers. The design is digitized by computer and then replicated with stitching on the leather.

PAINTINGS



Ancient Thunder



Charleston



Long Peak

From flowers to grandiose landscapes, our artists paint an enchanting story to create insightful depth and unique personalities for home décor. Choose one of our designs or request a custom design. Your ideas will be presented in the form of sketches before painting the finished design on the furniture you choose, making it a truly unique masterpiece.



Old Glory



Peonies



Vineyard

WOOD FINISH

Our wood specialists and carvers are among the most respected in the industry; many of them learned their craft from their fathers and grandfathers. Our passion extends to the wood selection for our exposed wood. We only use clear maple and walnut woods. Before a piece is stained or a special finish is applied, the wood is hand-sanded more than seven times, making it almost silky to the touch. Planing, routing and detailed carving are done by hand following a general pattern - as with all hand work, the beauty is in slight variations and nuances.

Please note: Any of these finishes on oak will cause a slight variation in color and grain.

PREMIUM FINISHES



Antique Bronze



Antique Silver



Antique White



Bark



Belgian Chocolate



Brilliance



Carmel



Chicory

The wood colors and textures shown are representations of the actual finishes. If an exact match is required, a sample must be sent to our factory. Actual wood samples are available upon request.



PREMIUM FINISHES



Cocoa



Coffee



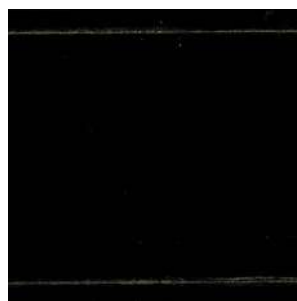
Cyrus



Denmark



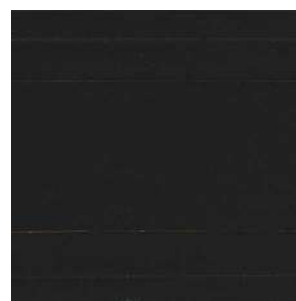
Driftwood



Ebony High Sheen



Frame Builders Maple



Java High Sheen



Mesa High Sheen



Rainier



Sand



Tawny

The wood colors and textures shown are representations of the actual finishes. If an exact match is required, a sample must be sent to our factory. Actual wood samples are available upon request.

STANDARD FINISHES



Artifacts



Bronze



Buck



Chateau



Chestnut



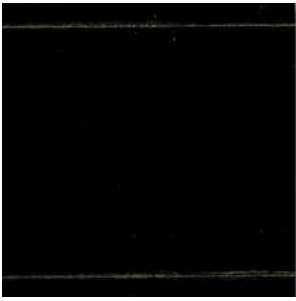
Cloud



Dark Oak



Dune



Ebony



English Tudor



Espresso



Florence



French Pine



Graphite



Java



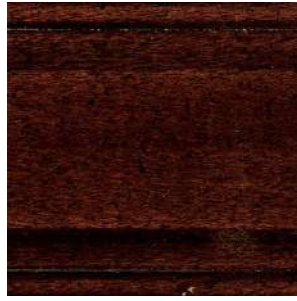
Lineage

The wood colors and textures shown are representations of the actual finishes. If an exact match is required, a sample must be sent to our factory. Actual wood samples are available upon request.

STANDARD FINISHES



Mahogany



Mahogany Distressed



Matty



Mesa



Metropolitan



Monarch



Normandy



Nutmeg



Oiled Walnut Distressed



Platinum



Pebble



Smoke



Tilden



Walnut



Walnut Distressed

The wood colors and textures shown are representations of the actual finishes. If an exact match is required, a sample must be sent to our factory. Actual wood samples are available upon request.

NAILHEAD TRIM

From the discreet textures of Traveler's Nail to the decorative characteristic of Antiqued Nail, nailheads lend the right amount of glamour to a piece of furniture. We offer a variety of sizes, finishes and textures to create just the right accent for each piece of furniture. Please visit our website for the latest in our nailhead trim.

A
Hancock Nail



AA
Hancock Nail
Medium



BK
Black Nickel Nail



BKM
Black Nickel Nail
Medium



BP
Black Pearl Nail



BPM
Black Pearl Nail
Medium



C
Moore Nail



CC
Carpenter's Nail



CCC
Carpenter's Nail
Medium



DD
Old Gold Nail



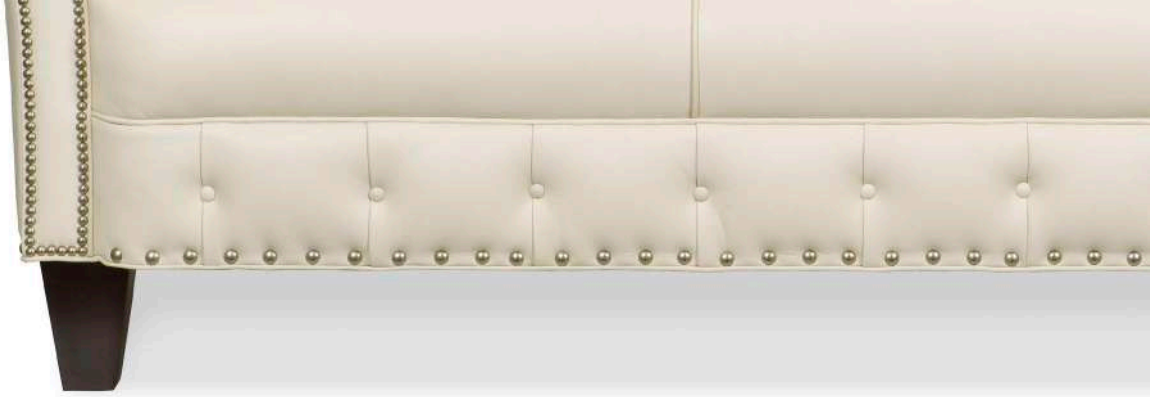
DDD
Old Gold Nail
Medium



FF
Pewter Nail
Medium



The nailheads shown are representations of the actual nailheads and not scaled to size. Actual nailhead trim samples are available upon request.



FFF

Pewter Nail



G

Renaissance Nail



H

Antiqued Nail



I

Gilt Nail



J

Nickel Nail



JJJ

Nickel Nail
Medium



L

Natural Nail



R

Large Truscan Nail



RR

Traveler's Nail



S

Small Truscan Nail



SS

Gunsmoke Nail
Large



TT

Gunsmoke Nail
Medium



TTT

Gunsmoke Nail
Small



TTT8

Gunsmoke Nail Tiny



Y

Callisto Nail



Z

Callisto Nail
Large



The nailheads shown are representations of the actual nailheads and not scaled to size. Actual nailhead trim samples are available upon request.

BASES

From polished aluminum to hand-carved Mahogany, we offer a wide range of chair bases to perfectly complement our Executive Chairs. Five Prong Steel interiors ensure durability with high quality casters for a smooth glide.



Base A, Caster 1

Five Prong Steel with Maple or Mahogany wood overlay
26" Diameter
Also Available with Caster 2 and 4.



Base B, Caster 4

Five Prong Steel with Maple or Mahogany wood overlay
25" Diameter



Base BP, Caster 3

Five Prong, Nylon Composite
26" Diameter



Base G, Caster 1

Five Prong Steel with Maple or Mahogany wood overlay
26" Diameter
Also Available with Caster 2.



Base K, Caster 4

Five Prong Steel with Maple or Mahogany wood overlay
25" Diameter



Base O, Caster 1

Five Prong Steel with Maple or Mahogany wood overlay
23" Diameter
Also Available with Caster 2 and 4.



Base PA, Caster 3

Five Prong, Die Cast Aluminum
26" Diameter



Base PAZ, Caster 4

Five Prong, Die Cast Aluminum
26" Diameter



Base PTH, Caster TH

Five Prong, Die Cast Aluminum
26" Diameter



Caster 1-BR
Bronze Caster
Available in rubberized material



Caster 1-DBR
Dark Bronze Caster
Available in rubberized material



Caster 1-CR
Chrome Caster
Available in rubberized material



Caster 3-BP
Black Plastic Caster
Best for wood floors



Caster 3-RBP
Rubberized Black Plastic Caster
Best for wood floors



Caster 4-BP
Black Plastic Caster
Best for wood floors



Dome Glide
Black Plastic Glide

Bases B, BP, K and PAZ are interchangeable.

Bases A and G are interchangeable (G with an upcharge).

Base O is not interchangeable.

Bases BP and PA are interchangeable.

Please note that interchanging bases may change the overall height of a style.

FOOT RESTS

Footrests on all of our bar stools come standard with Dark English Antique finish where applicable. Stainless Steel finish is available as an option.



Dark English Antique



Stainless Steel